



PLASTIC INJECTION MOLDING MACHINE



NADDAF MACHINERY

PLASTIC INJECTION MOLDING MACHINE

درباره ما

شرکت ماشینهای تزریق پلاستیک نداف با بیش از چند دهه سابقه در طراحی و ساخت ماشین های تزریق پلاستیک در تناژ مختلف در زمینه ساخت دستگاههای تزریق پلاستیک فعالیت می کند.



تکنیک، خلاقیت، ابتکار و دانش فنی پایه های اصلی پیشرفت این مجموعه شد، تا در سال ۱۳۷۸ با انتقال به شهرک صنعتی نمونه کشور شهرک صنعتی توس و گسترش دامنه فعالیت شرکت تحت نام انحصاری شرکت ماشینهای تزریق پلاستیک نداف با تولید انبوه ماشین آلات همچنان با قدرت به فعالیت خود ادامه دهد.

شرکت ماشین های تزریق پلاستیک نداف برای اولین بار دستگاههای تولید دسته سیم خودرو در کشور را راه اندازی و به تولید انبوه رساند.

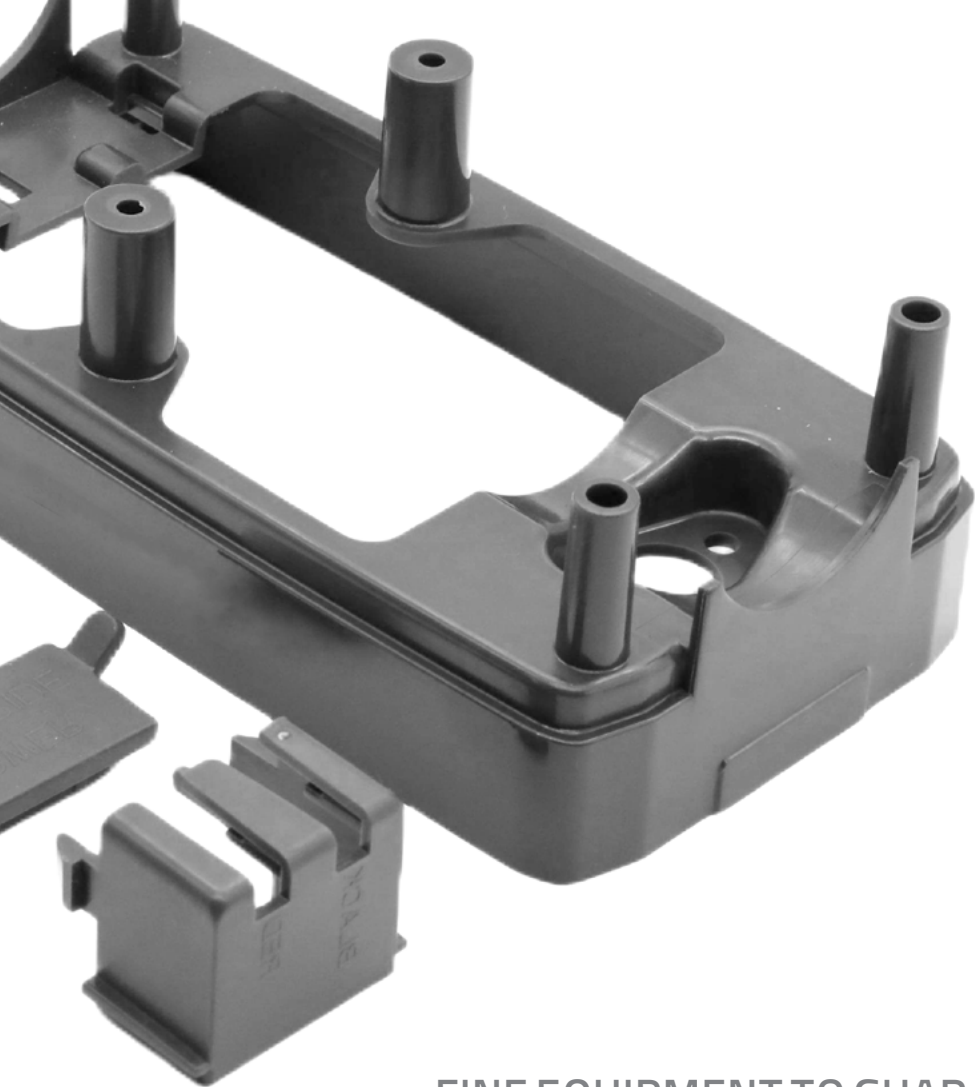


و مشتریان داخلی همچون:

شرکت ایران خودرو، شرکت سایپا، شرکت سرم سازی ثامن (استان قدس رضوی)، وزارت راه و ترابری، شرکت ایرما (صنایع ایران و مالزی)، گروه صنعتی پارت لاستیک، شرکت پارسا یاران خراسان، شرکت ترونیکس، شرکت تولیدی نیرو گستران خراسان، شرکت صنایع غذایی تبرک، گروه صنعتی پلی اتیلن کرمان، الکتریک خودرو شرق، پارسیان ایمن کیمیا، پویا خودرو، پارس بهیم سیستم، همگرتوس و ...

ساخت بیش از ۱۰۰۰ دستگاه از ماشین آلات تزریق پلاستیک و صادرات آن به کشورهای کنیا، عراق، ترکمنستان، افغانستان و... استان های تهران، خراسان رضوی، شمالی و جنوبی، فارس، هرمزگان، خوزستان، کرمان، سمنان، سیستان و بلوچستان، اصفهان، گیلان، مازندران، گلستان، آذربایجان غربی و شرقی نمونه هایی از دستاوردهای این گروه صنعتی می باشد.

شرکت ماشین های تزریق پلاستیک نداف بعد از تحویل، نصب و راه اندازی، محصولات خود را با ۲۴ ماه گارانتی بدون قید و شرط ۱۰ سال خدمات پس از فروش، مشتریان خود را همراهی میکند.



FINE EQUIPMENT TO GUARANTEE THE QUALITY

Product quality is the life of the company. The processing center and NC boring and milling machine guarantee the precision of parts.

Advanced precise rod clamping force sensor is adopted. Compared with the traditional clamping testing method, it is more precise and reliable, and easier and more convenient in operation.



PRODUCTION BASE

FIND DEFECT TO MAKE IT PERFECT!

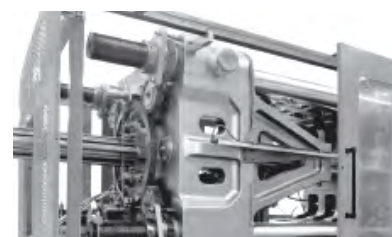
The company keeps finding and improving if production, and makes the product perfect. Development principle of credit and innovation are strictly upheld.



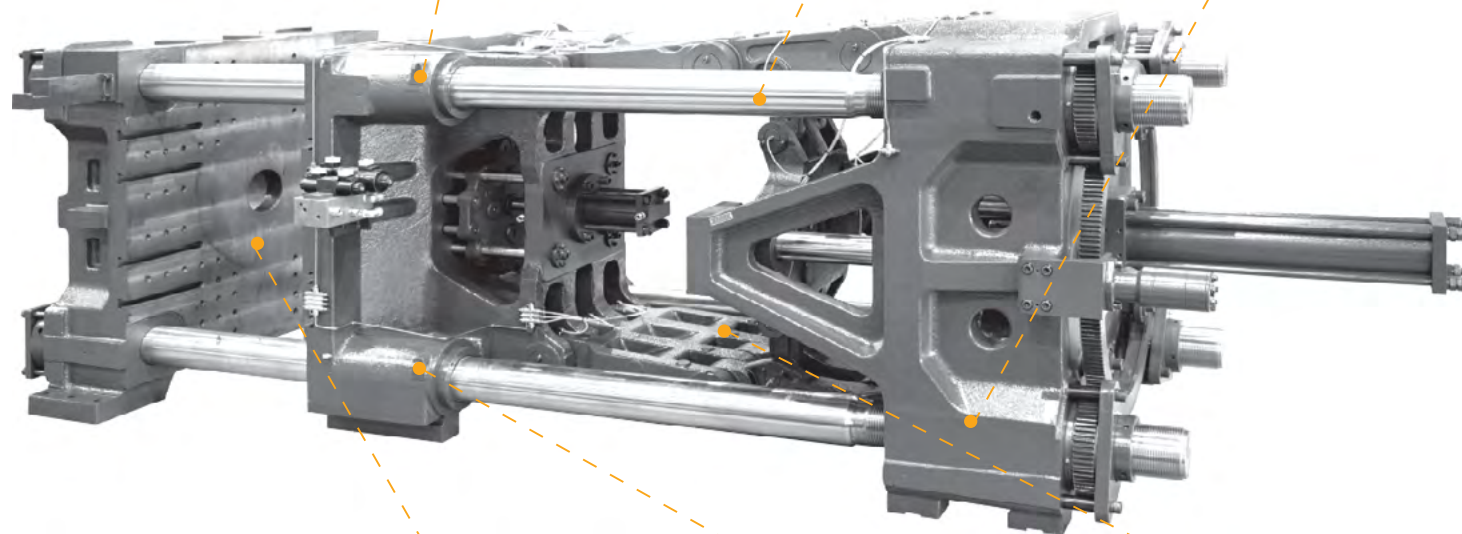
Molybdenum-contained copper sleeves or a self-lubricating guide sleeves are used on the draw bar and the guide bar. By means of its special abrasion resistance and low friction coefficient, it dramatically increases the life service of the draw bar.



The tie bar is analyzed by CAE. After professional heat treatment and centralized treatment by CNC machining, it can effectively control the precision and quality of the tie bar and improve the service life of it.



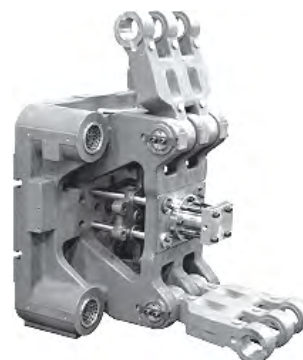
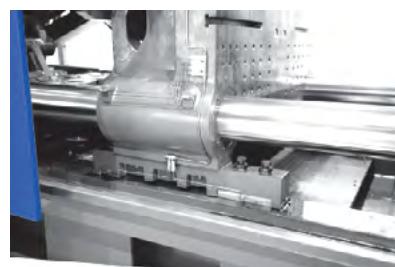
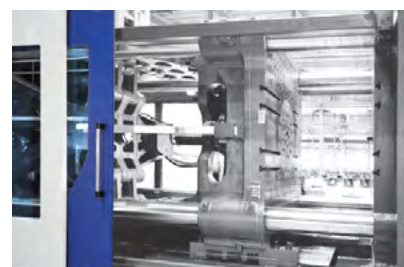
Below the tail board of NPC730 or above products is installed with an antiwear pad to lower the friction coefficient of the template during adjustment and make it convenient for adjustment.



The templates adopts T-shape slot. The reasonable T-shape slot arrangement not only makes it convenient to install moulds, but also enhances the strength of the template.

The moving template adopts an extended anti-skid design, which makes the machine run more smoothly and protects the mold.

Optimized one-piece front connecting rod is wholly casted, thus to guarantee a fine rigidity and smooth movement. The main locking shaft remains static during opening and closing action, thus to reduce wearing of the die.

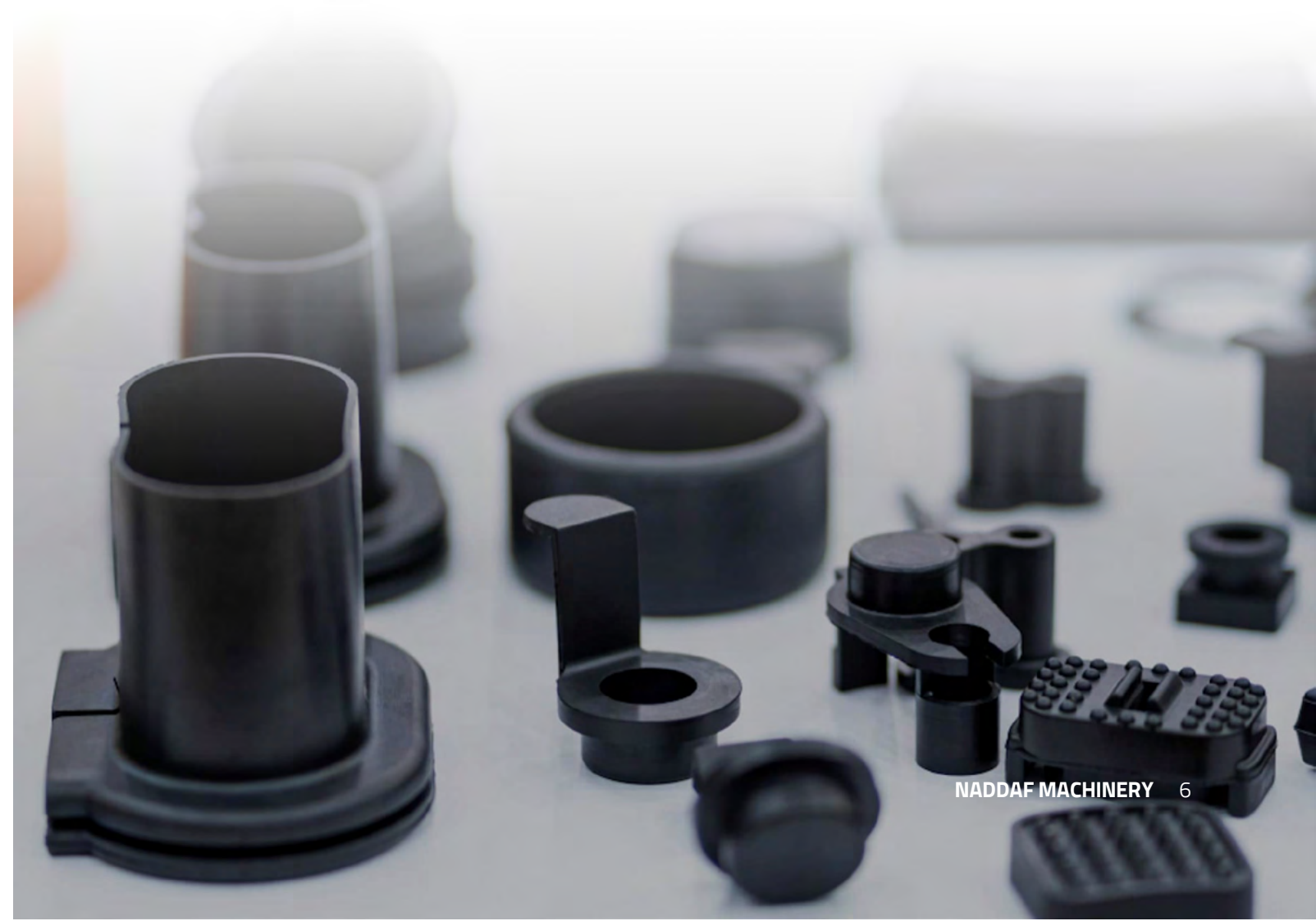


واحد گیره

CLAMPING UNIT

Strong rigidity of the template and stable operation

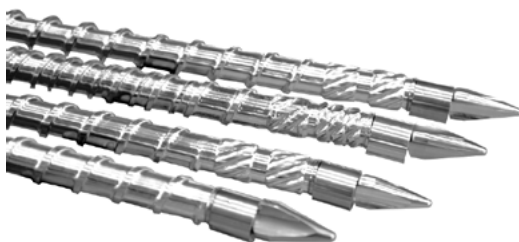
Diagonal type dual toggle mechanic mould clamping mechanism
One-piece casting of the connecting rod before connection
Standard interface of the neutron device Automatic centralized lubrication system Automatic mould adjustment function





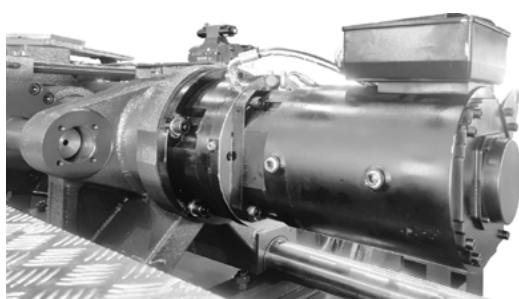
Proportion back pressure control

Pre-plastic use proportional back pressure control, easy to operate, stable operation



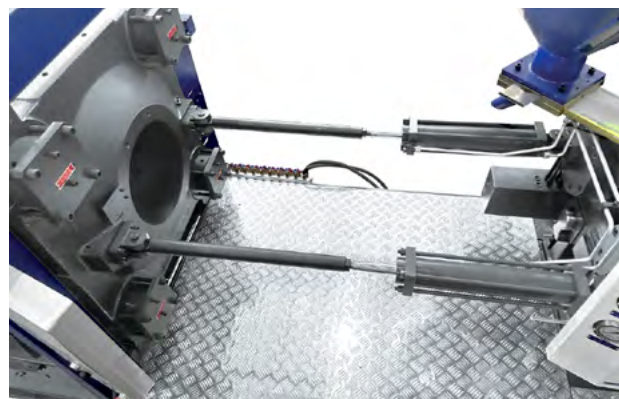
Special screw

Using alloy or electroplated special screws, effectively improving the plasticizing speed and plasticizing effect of the product



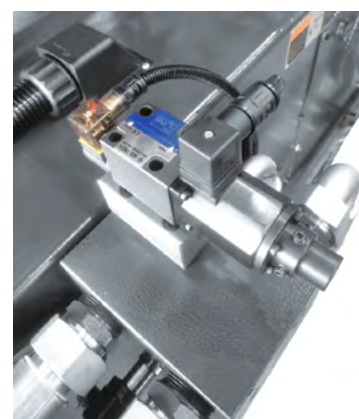
Electro-melt system (optional)

Improve plasticizing efficiency, shorten the molding cycle, and facilitate the simultaneous mold opening and material storage functions



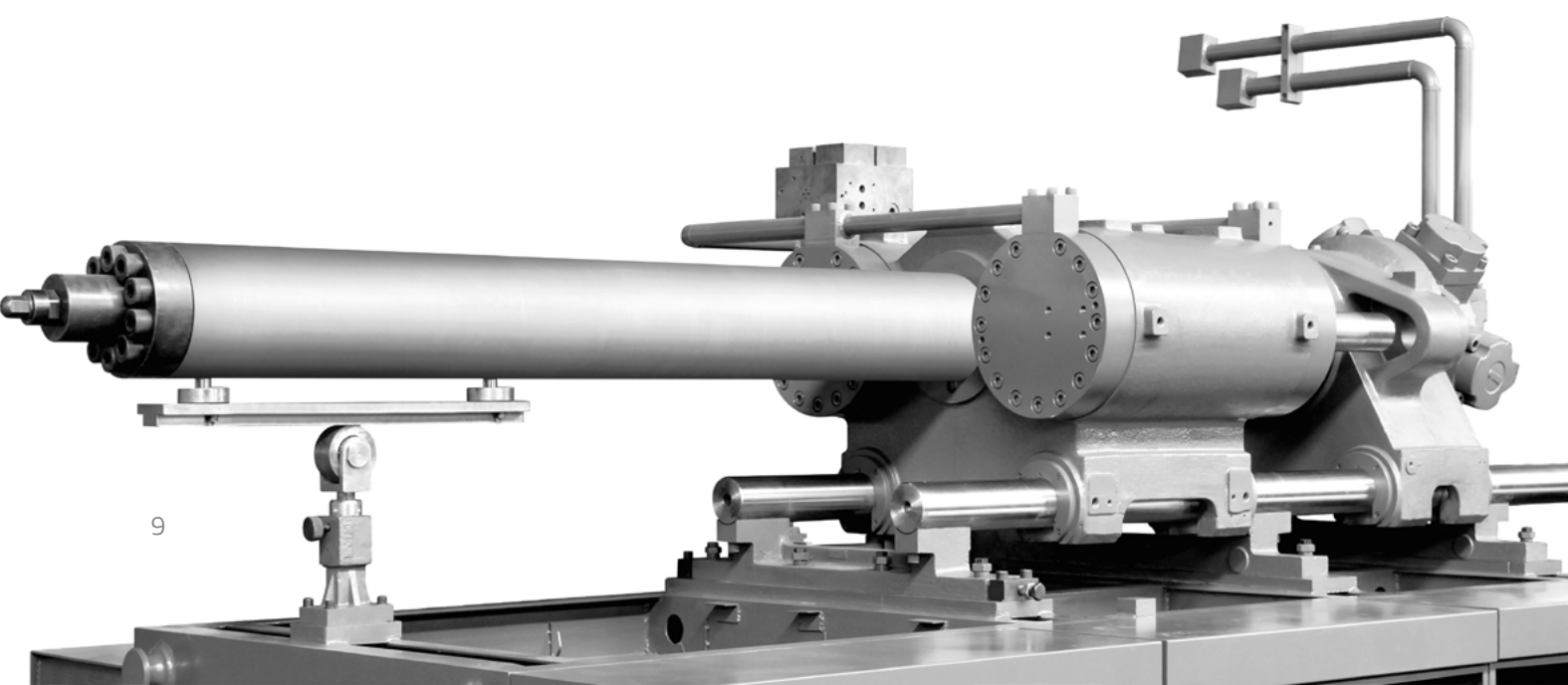
Balanced dual-cylinder integral moving structure

The dual-cylinder translation structure is vertically balanced on both sides of the barrel, ensuring precise nozzle alignment and stable injection.



Injection open-loop control (optional)

Open-loop control is used during injection to ensure that the screw can operate at a constant speed during injection.



واحد تزریق

INJECTION UNITE

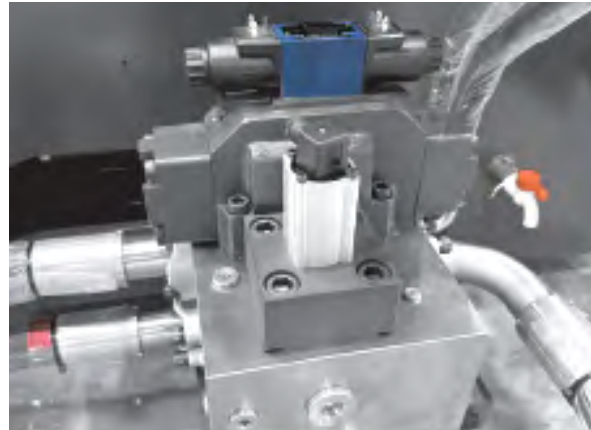
Accurate injection and Stable operation

- Dual-cylinder balanced injection system
- Dual-cylinder base forward
- Multi-stage injection pressure/speed & position control
- Multi-stage storing pressure/speed & position control
- High-torque oil motor drive screw preplasticizing device
- Hopper temperature control by computer PID
- Ceramic hopper heating device
- Hopper blanking opening cooling system
- Screw speed tester



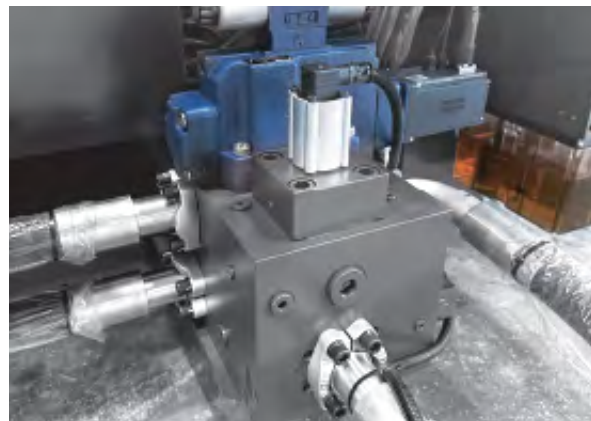
Ultra-high response and energy-saving servo power system

The entire series uses low-noise, high-pressure and high-speed pumps and the system pressure can reach 17.5 Mpa.



Safety valve control

The entire series uses safety valve control, simplifying the hydraulic system while ensuring safe operation of the equipment.



The mold clamping is controlled by servo proportional valve (optional for NPC500 or below)

The response speed of the mold opening and closing is fast, the braking is more precise, the repeated position of the mold opening is accurate to 0.1mm, and the core pulling action is synchronized during the mold opening and closing process, resulting in faster response, more stable and precise action.



واحد هیدرولیک

HYDRAULIC UNIT

Fast response and stable output

The hydraulic system wholly adopts imported hydraulic components of famous brands, which improves the oil circuit combining inserts and slide valves, and also effectively raises the response speed of the system.

Precise and stable hydraulic power device;

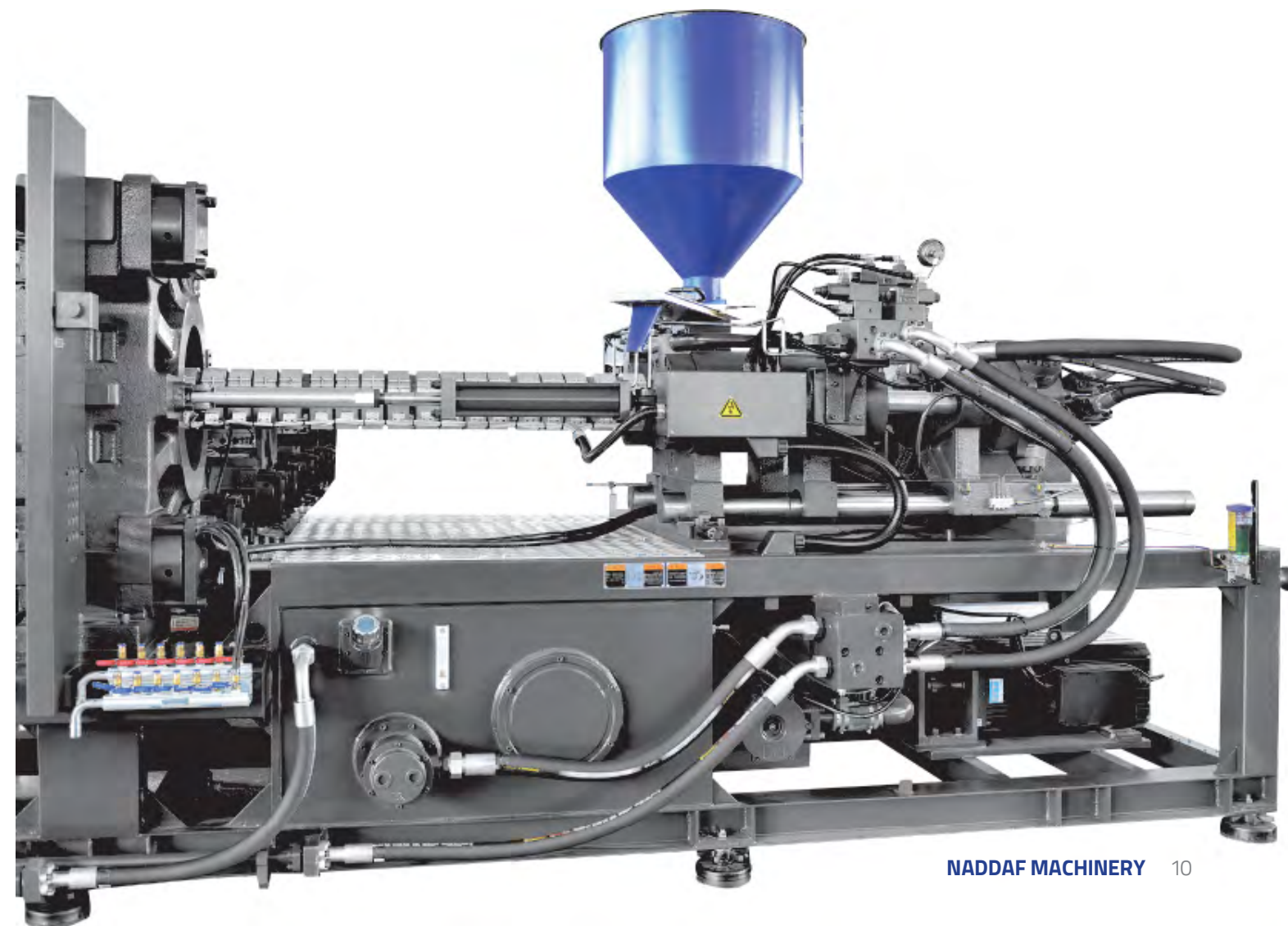
Sensitive and stable hydraulic control elements;

Oil circuit control system combining reasonably optimized inserts and slide valves, which improves the response speed of the system, and makes it convenient for maintenance;

Proportionally optimized multi-pump control system;

High-efficient and energy-saving servo control system;

The whole series adopts flaring type seamless steel pipe to solve the problem of oil leakage.



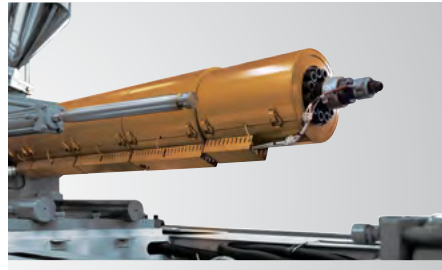
More efficient And More Economical

NPC servo drive energy-saving precision injection molding machine adopts excellent system, which can solve the problem of large vibration of unlocking mold and unsmooth operation, thus affecting machine life and leading to low yield. (optional devices)

The system is combined with the proportional directional valve, which can improve the position repeatability of mold opening, injection, material storage and others. (optional devices)



More Personalization
Reserve ejector back protection signal
Reserved injection signal
Robot interface (domestic standard)



Infrared nano heater (optional)



Control unit
advanced dedicated computer controllers with widescreen
and fast response speed



واحد الکترونیک و کنترلر

HIGH-END CONTROLLER

One-key setting of mold opening and closing



ماشین های تولید سطل با جداره بلند

INJECTION MACHINE SPECIALLY FOR BUCKETS MOLDING

- Fork type mechanism (NingSu patent)
- Long open stroke
- Large displacement servo
- High speed plasticizing capacity system



Technical parameter

اطلاعات فنی

规格 Specification		NPC450	NPC650	NPC730
		A	A	A
INJECTION UNIT				
Screw diameter	mm	80	100	100
Screw L/D ratio	L/D	21	23	23
Shot volume(therretical)	cm³	1960	3142	3613
Injection weight(ps)	g	1784	2859	3288
Injection pressure	MPa	158	150	167
Screw speed	rpm	186	173	173
CLAMPING UNIT				
Clamping force	KN	4500	6500	7300
Open stroke	mm	770	910	970
Space between tie bars(W×H)	mm	770×770	870×870	970×970
Max.Mould height	mm	780	900	960
Min.Mould height	mm	250	350	400
Ejector stroke	mm	200	250	280
Ejector force	KN	110	150	210
OTHERS				
Max.pump pressure	MPa	17.5	17.5	17.5
Pump motor power	KW	64.6	64.6+64.6	64.6+64.6
Heating power	KW	35	51.55	61.7
Machine dimension(L×W×H)	m	7.98×1.84×2.30	9.8×2.14×2.71	11.2×2.35×2.90
Oiltank cubage	L	815	1070	1180
Machine weight	t	17	27.3	32.6

ماشین های تولید ظروف جداره نازک INJECTION MACHINE SPECIALLY FOR THIN WALL CONTAINERS

- Fast injection system
- Fork type mechanism (NingSu patent)
- Balance injection



Technical parameter

اطلاعات فنی

规格 Specification		NPC280H	NPC360H	NPC400H	NPC460H
		A	A	A	A
INJECTION UNIT					
Screw diameter	mm	65	65	65	65
Screw L/D ratio	L/D	25	25	25	25
Shot volume(therretical)	cm³	863	863	863	863
Injection weight(ps)	g	785	785	785	785
Injection pressure	MPa	172	172	172	172
Screw speed	rpm	400	400	400	250
CLAMPING UNIT					
Clamping force	KN	2800	3600	4000	4600
Open stroke	mm	520	610	660	680
Space between tie bars(W×H)	mm	570×520	640×610	680×650	730×680
Max.Mould height	mm	600	650	720	750
Min.Mould height	mm	230	230	270	300
Ejector stroke	mm	100	135	135	135
Ejector force	KN	70	70	70	70
OTHERS					
Max.pump pressure	MPa	17.5	17.5	17.5	17.5
Pump motor power	KW	64.6	64.6+50.2	64.6+64.6	64.6+64.6
Heating power	KW	36.5	36.5	36.5	36.5
Machine dimension(L×W×H)	m	6.73×1.75×2.18	7.55×2.1×2.53	8.2×1.92×2.36	8.3×2.0×2.39
Oil tank cubage	L	550	700	740	900
Machine weight	t	12.2	14.7	21.5	23

ماشین های تولید سبد

INJECTION MACHINE SPECIALLY FOR BASKETS

- Fork type mechanism (NingSu patent)
- Balance injection
- Large displacement servo.
- Large injection weight
- special alloy screw barrel & alloy suction pipe group



Technical parameter

اطلاعات فنی

规格 Specification		NPC400	NPC470	NPC530
		A	A	A
INJECTION UNIT				
Screw diameter	mm	88	95	100
Screw L/D ratio	L/D	18.4	17.9	18.8
Shot volume(therretical)	cm³	2372	3119	3456
Injection weight(ps)	g	2159	2838	3145
Injection pressure	MPa	130	140	126
Screw speed	rpm	195	190	190
CLAMPING UNIT				
Clamping force	KN	3800	4700	5300
Open stroke	mm	720	770	850
Space between tie bars(W×H)	mm	720×720	770×770	820×820
Max.Mould height	mm	780	780	910
Min.Mould height	mm	250	250	330
Ejector stroke	mm	180	200	240
Ejector force	KN	110	110	150
OTHERS				
Max.pump pressure	MPa	17.5	17.5	17.5
Pump motor power	KW	76	76	76
Heating power	KW	35	40.7	51.55
Machine dimension(L×W×H)	m	7.83×1.83×2.85	8.32×2.05×2.62	8.53×2.08×2.65
Oil tank cubage	L	745	815	890
Machine weight	t	14	17	21

ماشین های تولید پریفورم

INJECTION MACHINE SPECIALLY FOR PREFORMS

- Large ejection force
- PET SCREW optimization design
- Special enlarged hydraulic motor

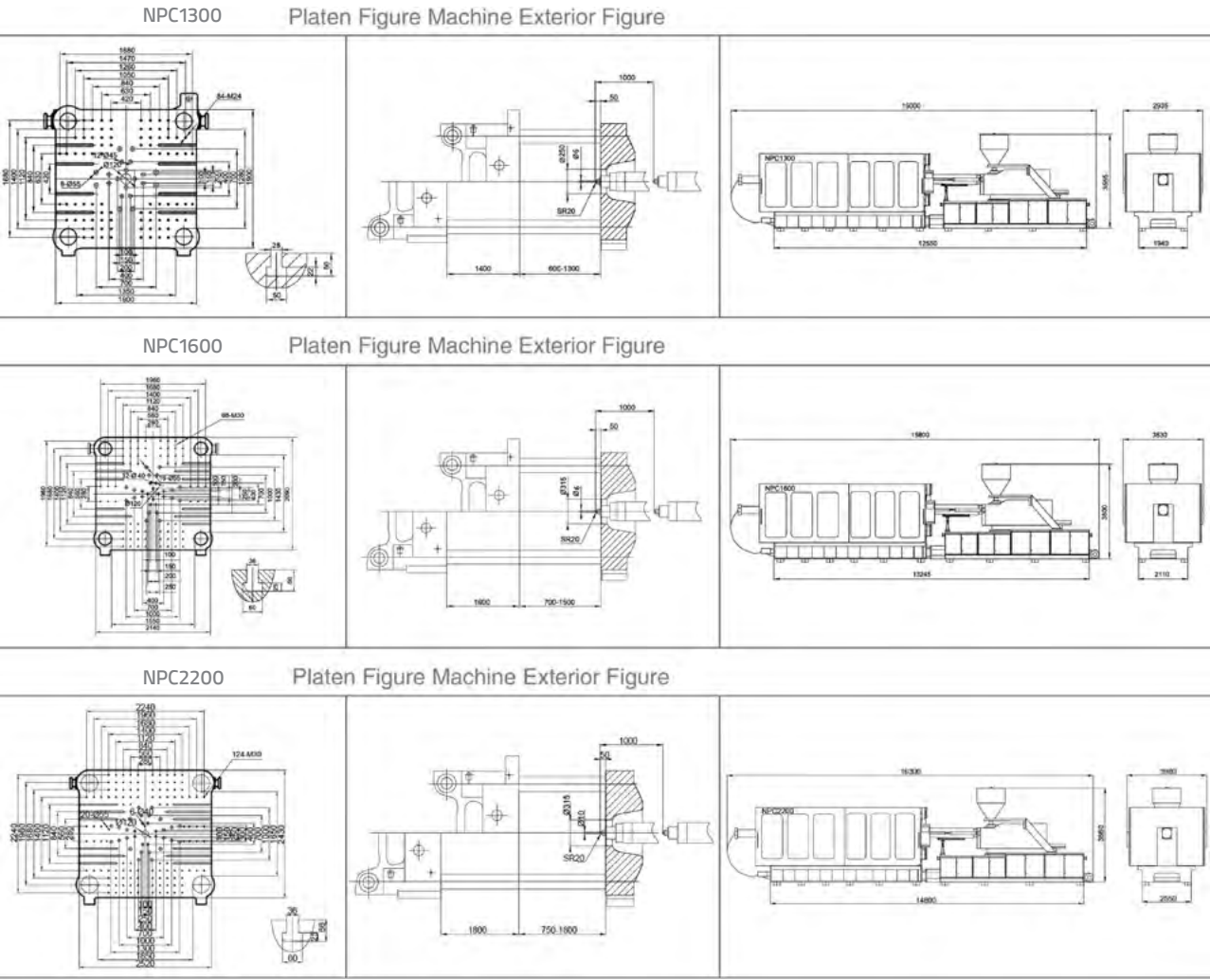


Technical parameter

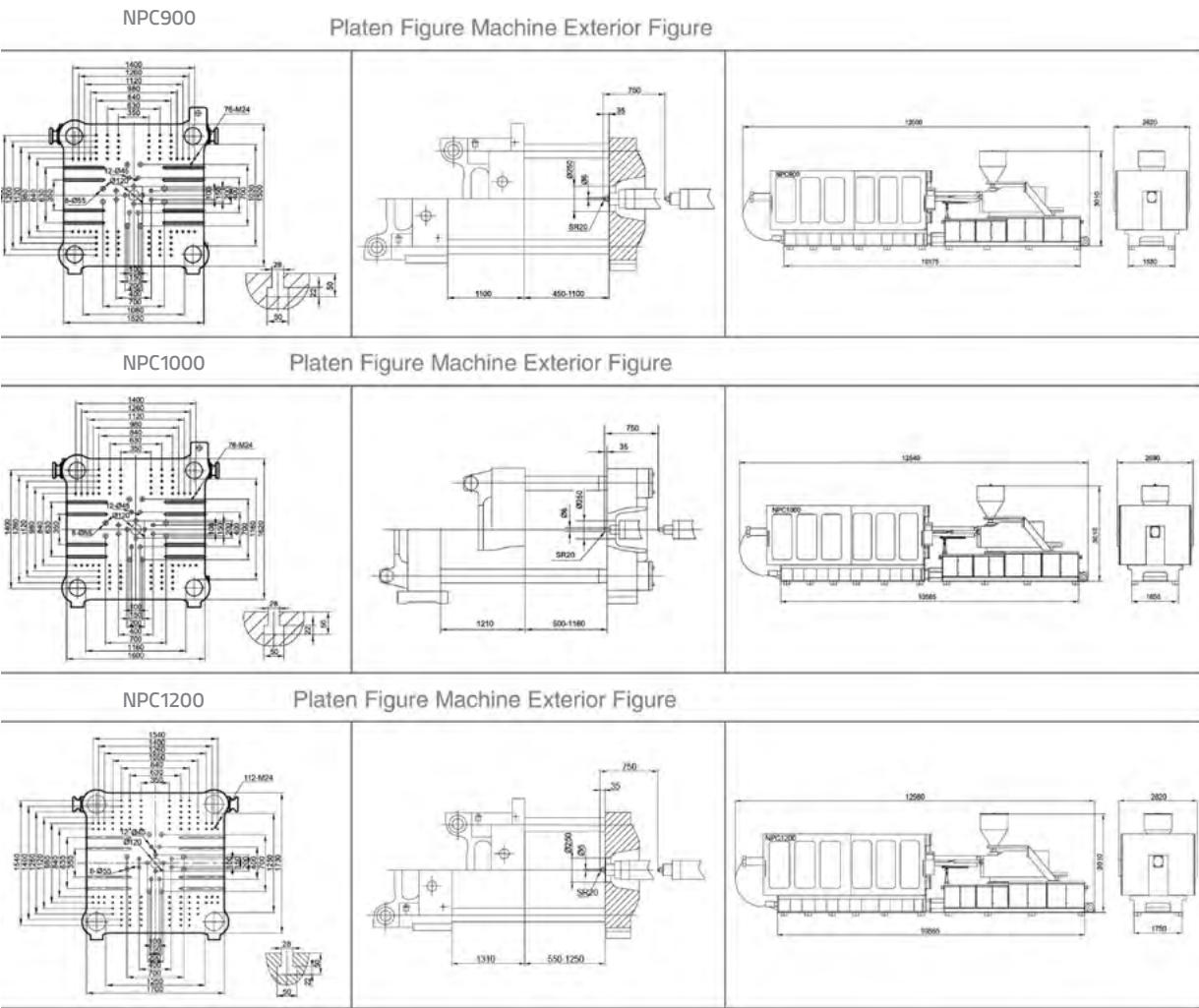
اطلاعات فنی

规格 Specification		NPC140PET	NPC160PET	NPC200PET	NPC260PET	NPC280PET	NPC320PET	NPC380PET	NPC450PET	NPC500PET	NPC600PET
		C	C	C	C	C	C	C	C	C	C
INJECTION UNIT											
Screw diameter	mm	50	55	60	65	75	80	85	85	100	105
Screw L/D ratio	L/D	24	24	24	24	24	24	24	24	24	24
Shot volume(therretical)	cm ³	432	508	797	945	1480	1960	2218	2218	3140	3983
Injection weight(ps)	g	518	610	956	1134	1776	2352	2662	2662	3768	4780
Injection rate	g/s	195	228	295	341	394	578	524	524	778	1007
Injection pressure	MPa	150	160	155	171	162	158	174	174	150	151
Screw speed	rpm	120	155	150	145	105	100	84	84	80	100
CLAMPING UNIT											
Clamping force	KN	1400	1600	2000	2600	2800	3200	3800	4500	5000	6000
Open stroke	mm	380	435	500	540	590	660	720	770	850	910
Space between tie bars (W×H)	mm	410×410	470×470	525×525	580×580	610×610	660×660	720×720	770×770	820×820	870×870
Max.Mould height	mm	450	520	530	580	630	720	780	780	910	900
Min.Mould height	mm	160	180	200	200	200	250	250	250	330	350
Ejector stroke	mm	120	135	150	150	150	180	180	200	240	250
Ejector force	KN	70	70	90	90	90	110	150	150	180	180
OTHERS											
Max.pump pressure	MPa	17.5	17.5	17.5	17.5	17.5	17.5	17.5	17.5	17.5	17.5
Pump motor power	KW	18.7	27.8	27.8	31.3	31.3	50.2	50.2	50.2	64.6	64.6+27.8
Heating power	KW	15.5	18.6	22.6	26.5	39.2	43.7	50.9	50.9	69.4	76.3
Machine dimension (L×W×H)	m	4.75×1.2×1.98	5.28×1.34×2.06	5.73×1.4×2.21	6.05×1.54×2.4	6.17×1.62×2.43	7.12×1.88×2.53	7.83×1.82×2.58	8.08×2.0×2.62	8.53×2.08×2.6	9.8×2.14×2.71
Oil tank cubage	L	155	205	205	275	300	635	745	615	890	990
Machine weight	t	3.6	5.1	6.8	7.8	8.8	12.5	14	16.3	20	26.3

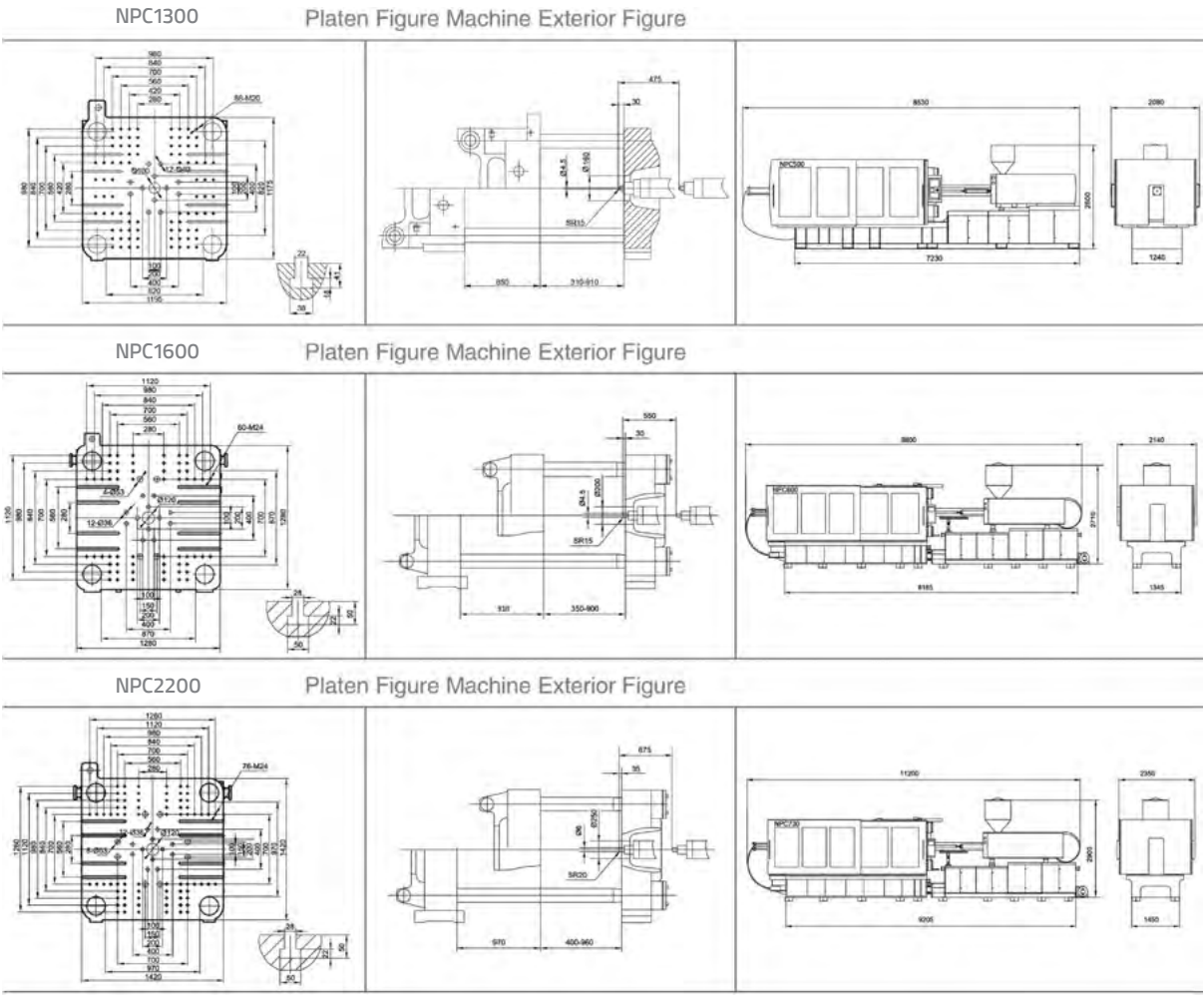
项目 Item		规格 Specification	NPC1300				NPC1600			NPC2200			
			A	B	C	D	A	B	C	A	B	C	D
注射装置 Injection Unit													
螺杆直径 Screw diameter	mm	110	120	130	140	130	140	150	140	150	160	170	
螺杆长径比 Screw L/D ratio	L/D	26.2	24	22.2	20.6	24	22.3	20.8	24	22.4	21	19.8	
理论注射容量 Shot volume(theoretical) (ps)	cm ³	5797	6899	8096	9390	8349	9683	11115	11545	13253	15079	17023	
注射重量 Injection weight(ps)	g	5275	6278	7368	8545	7598	8812	10115	10506	12060	13722	15491	
注射速率 Injection rate	g/s	826	983	1154	1338	1142	1325	1521	1120	1286	1463	1652	
注射压力 Injection pressure	MPa	203	171	146	126	180	155	135	186	162	142	126	
螺杆转速 Screw speed	rpm	120				109			85				
锁模装置 Clamping Unit													
锁模力 Clamping force	Kn	13000				16000			22000				
移模行程 Open stroke	mm	1400				1600			1800				
拉杆间距(宽x高) Space between tie bars(WxH)	mm	1350x1280				1550x1430			1850x1650				
最大模厚 Max.Mould height	mm	1300				1500			1800				
最小模厚 Min.Mould height	mm	600				700			750				
顶出行程 Ejector stroke	mm	350				400			425				
顶出力 Ejector force	Kn	270				318			450				
其他 General													
最大油泵压力 Max.Pump pressure	MPa	17.5				17.5			17.5				
伺服功率 Motor power/servo power	kw	64.6+64.6				50.2+50.2+50.2			64.6+64.6+64.6				
电热功率 Heating power	Kw	85.55				95.05			133.7				
外形尺寸(长x宽x高) Machine dimension(LxWxH)	m	15.0x2.94x3.67				15.8x3.53x3.80			16.3x3.98x3.86				
油箱容积 Tank volume	L	1965				2400			2800				
机器重量 Machine weight	t	84				110			145				



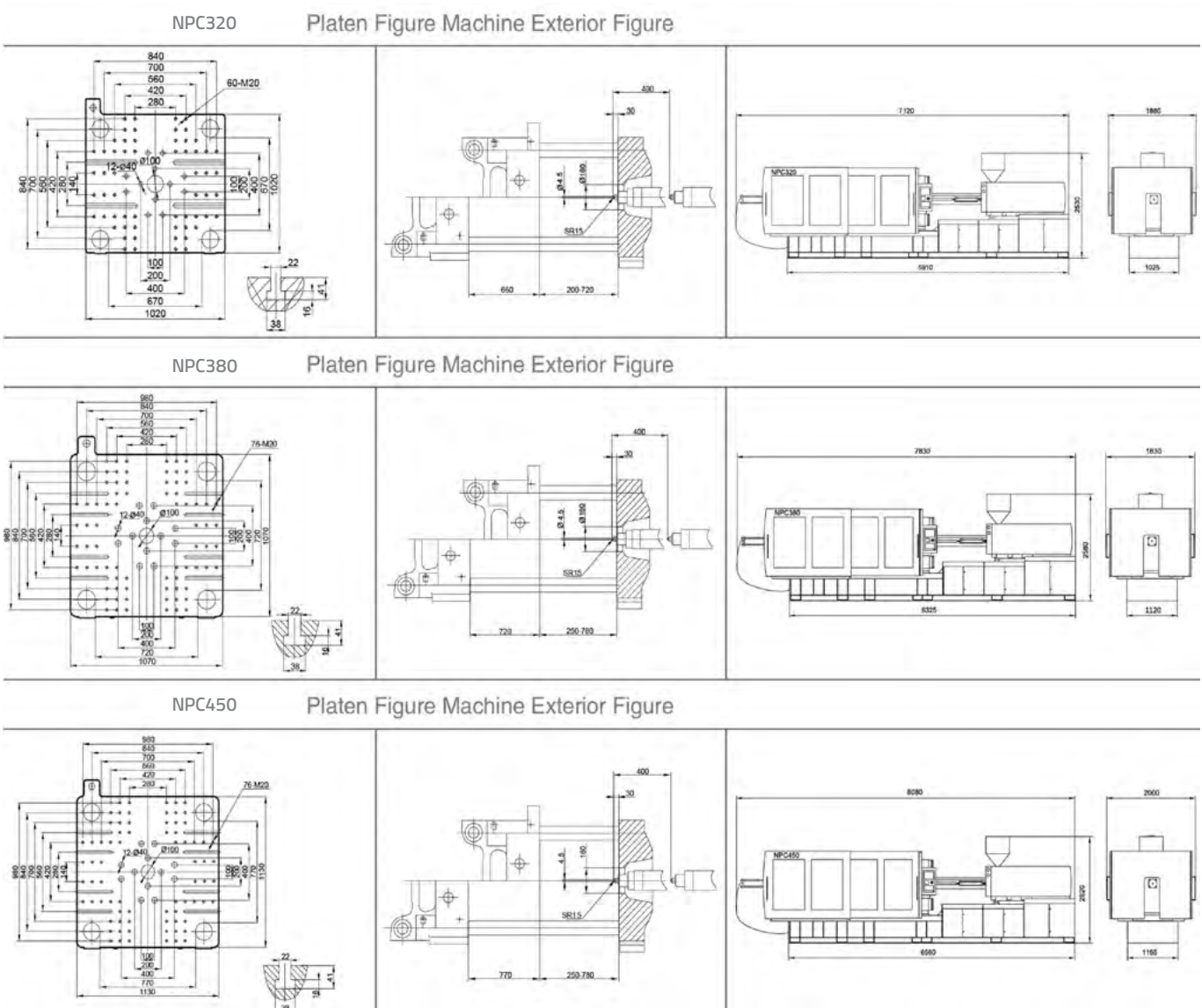
规格 Specification		NPC900				NPC1000				NPC1200			
		A	B	C	D	A	B	C	D	A	B	C	D
注射装置 Injection Unit													
螺杆直径 Screw diameter	mm	90	100	110	120	100	110	120	130	100	110	120	130
螺杆长径比 Screw L/D ratio	L/D	24.2	22	20	18.3	24.2	22	20.2	18.6	24.2	22	20.2	18.6
理论注射容量 Shot volume(theoretical) (ps)	cm ³	3181	3927	4752	5655	4320	5227	6220	7299	4320	5227	6220	7299
注射重量 Injection weight(ps)	g	2894	3573	4324	5146	3930	4757	5660	6643	3930	4757	5660	6643
注射速率 Injection rate	g/s	583	720	871	1036	770	932	1109	1302	698	844	1005	1179
注射压力 Injection pressure	MPa	237	192	159	133	230	190	160	136	230	190	160	136
螺杆转速 Screw speed	rpm	115				148				148			
锁模装置 Clamping Unit													
锁模力 Clamping force	Kn	9000				10000				12000			
移模行程 Open stroke	mm	1100				1210				1310			
拉杆间距(宽x高) Space between tie bars(WxH)	mm	1080x1030				1160x1160				1250×1250			
最大模厚 Max.Mould height	mm	1100				1160				1250			
最小模厚 Min.Mould height	mm	480				500				550			
顶出行程 Ejector stroke	mm	300				325				325			
顶出力 Ejector force	Kn	245				245				245			
其他 General													
最大油泵压力 Max.Pump pressure	MPa	17.5				17.5				17.5			
伺服功率 Motor power/servo power	kw	50.2+50.2				64.6+64.6				64.6+64.6			
电热功率 Heating power	Kw	65.6				81.5				81.5			
外形尺寸(长x宽x高) Machine dimension(LxWxH)	m	12.00x2.62x3.01				12.54x2.69x3.01				12.98×2.82×3.0			
油箱容积 Tank volume	L	1565				1640				1670			
机器重量 Machine weight	t	47.3				50				61			



规格 Specification 项目 Item		NPC500				NPC600				NPC730			
		A	B	C	D	A	B	C	D	A	B	C	D
注射装置 Injection Unit													
螺杆直径 Screw diameter	mm	75	80	85	90	90	95	100	105	90	95	105	110
螺杆长径比 Screw L/D ratio	L/D	22.7	21	20	18.9	23.1	21.9	20.7	19.7	22.3	21.1	19	19
理论注射容量 Shot volume(theoretical) (ps)	cm ³	1948	2216	2485	2785	2544	2835	3140	3461	2926	3260	3983	4371
注射重量 Injection weight(ps)	g	1747	2016	2257	2538	2315	2580	2858	3152	2663	2967	3625	3977
注射速率 Injection rate	g/s	396	451	509	571	653	727	806	889	588	656	801	879
注射压力 Injection pressure	MPa	224	197	174	156	185	166	150	136	206	185	151	138
螺杆转速 Screw speed	rpm	176				158				141			
锁模装置 Clamping Unit													
锁模力 Clamping force	Kn	5000				6000				7300			
移模行程 Open stroke	mm	850				910				970			
拉杆间距(宽x高) Space between tie bars(WxH)	mm	820x820				870x870				970x970			
最大模厚 Max.Mould height	mm	910				900				960			
最小模厚 Min.Mould height	mm	330				350				400			
顶出行程 Ejector stroke	mm	240				250				280			
顶出力 Ejector force	Kn	150				150				210			
其他 General													
最大油泵压力 Max.Pump pressure	MPa	17.5				17.5				17.5			
伺服功率 Motor power/servo power	kw	64.6				64.6+27.8				64.6+27.8			
电热功率 Heating power	Kw	40.7				55.55				61.1			
外形尺寸(长x宽x高) Machine dimension(LxWxH)	m	8.53x2.08x2.6				9.8x2.14x2.71				11.2x2.35x2.90			
油箱容积 Tank volume	L	890				990				1180			
机器重量 Machine weight	t	20.0				26.3				32.6			



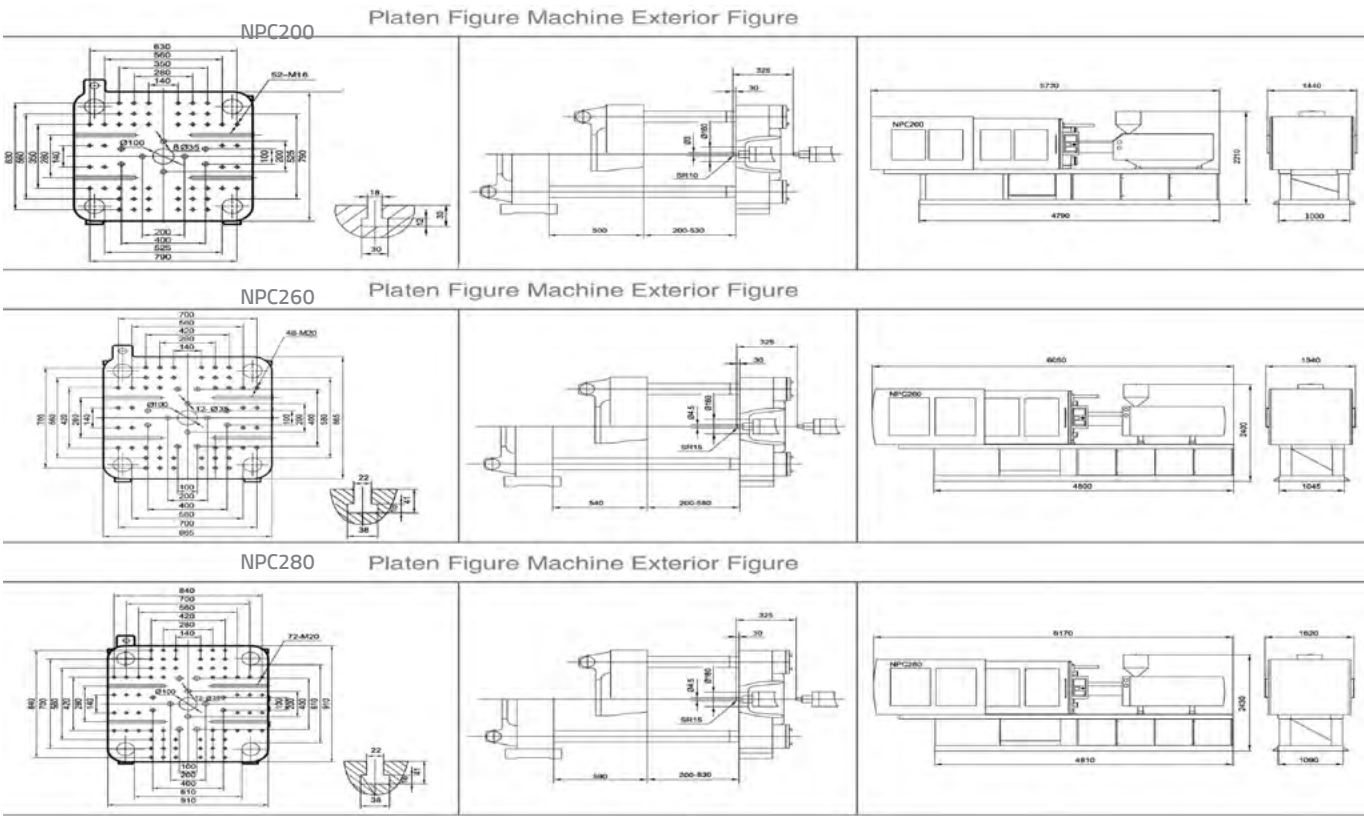
项目 Item		规格 Specification	NPC320			NPC380			NPC450		
			A	B	C	A	B	C	A	B	C
注射装置 Injection Unit											
螺杆直径 Screw diameter	mm	65	70	75	70	75	80	70	75	80	
螺杆长径比 Screw L/D ratio	L/D	22.5	21.5	20	23.6	22	20.6	23.6	22	20.6	
理论注射容量 Shot volume(theoretical) (ps)	cm ³	1111	1289	1480	1500	1723	1960	1500	1723	1960	
注射重量 Injection weight(ps)	g	1013	1175	1349	1365	1567	1784	1365	1567	1784	
注射速率 Injection rate	g/s	263	304	350	336	386	439	336	386	439	
注射压力 Injection pressure	MPa	215	186	162	206	180	158	206	180	158	
螺杆转速 Screw speed	rpm	226			190			190			
锁模装置 Clamping Unit											
锁模力 Clamping force	Kn	3200			3800			4500			
移模行程 Open stroke	mm	660			720			770			
拉杆间距(宽x高) Space between tie bars(WxH)	mm	670x670			720x720			770x770			
最大模厚 Max.Mould height	mm	720			780			780			
最小模厚 Min.Mould height	mm	250			250			250			
顶出行程 Ejector stroke	mm	180			180			200			
顶出力 Ejector force	Kn	70			110			110			
其他 General											
最大油泵压力 Max.Pump pressure	MPa	17.5			17.5			17.5			
伺服功率 Motor power/servo power	kw	50.2			50.2			50.2			
电热功率 Heating power	Kw	31.4			35			35			
外形尺寸(长x宽x高) Machine dimension(LxWxH)	m	7.12x1.88x2.53			7.83x1.83x2.58			8.08x2.0x2.62			
油箱容积 Tank volume	L	635			745			815			
机器重量 Machine weight	t	12.5			14.0			16.3			



Technical parameter

اطلاعات فنی

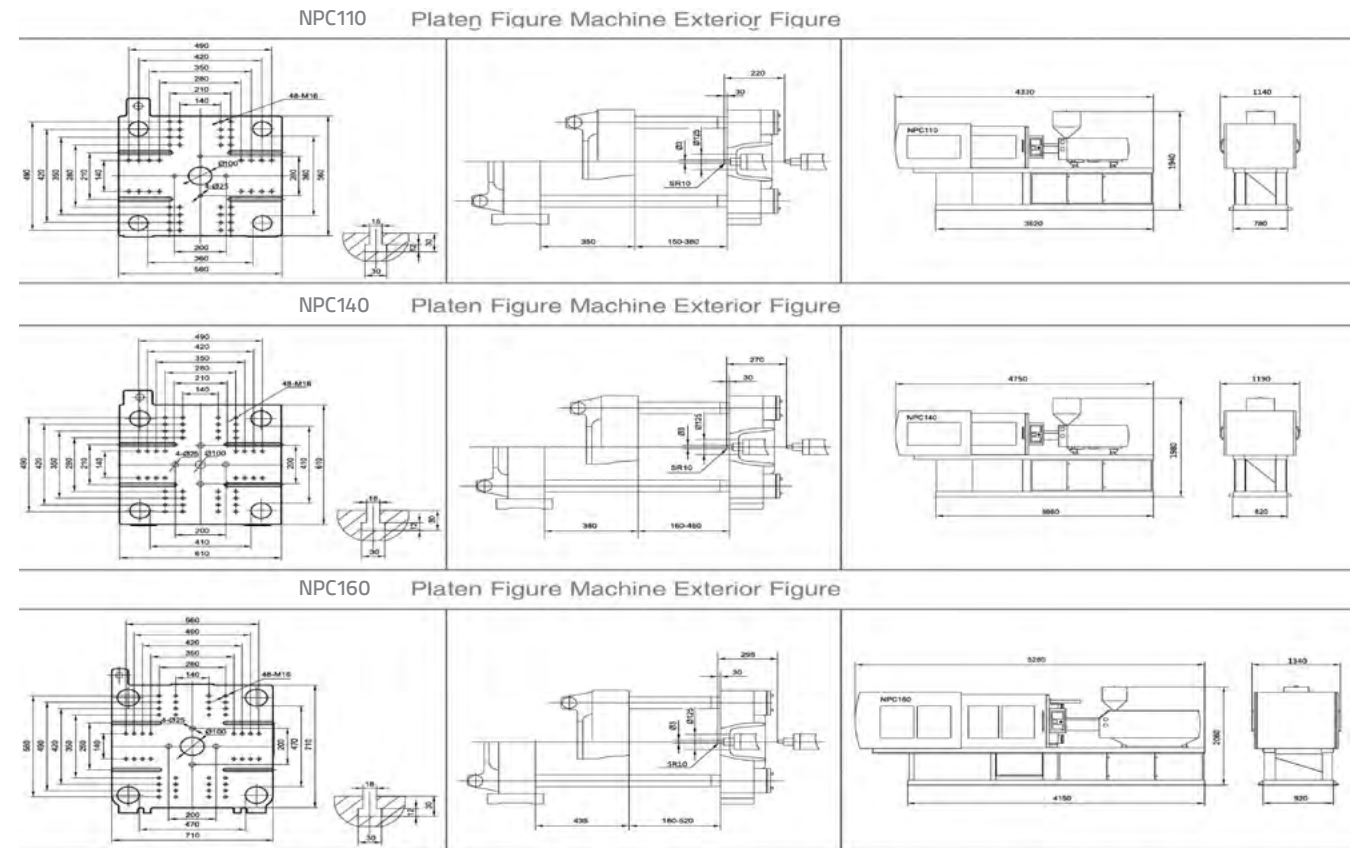
规格 Specification 项目 Item		NPC200			NPC260			NPC280		
		A	B	C	A	B	C	A	B	C
注射装置 Injection Unit										
螺杆直径 Screw diameter	mm	45	50	55	50	55	60	55	60	65
螺杆长径比 Screw L/D ratio	L/D	23.3	21	19.1	23	21	19.2	22.9	21	19.4
理论注射容量 Shot volume(theoretical) (ps)	cm ³	397	490	593	510	617	735	676	805	945
注射重量 Injection weight(ps)	g	361	446	540	464	561	669	616	733	860
注射速率 Injection rate	g/s	146	180	218	198	240	285	202	241	282
注射压力 Injection pressure	MPa	239	194	160	224	185	155	240	201	171
螺杆转速 Screw speed	rpm	208			227			220		
锁模装置 Clamping Unit										
锁模力 Clamping force	Kn	2000			2600			2800		
移模行程 Open stroke	mm	500			540			590		
拉杆间距(宽x高) Space between tie bars(WxH)	mm	525x525			580x580			610x610		
最大模厚 Max.Mould height	mm	530			580			630		
最小模厚 Min.Mould height	mm	200			200			200		
顶出行程 Ejector stroke	mm	150			150			150		
顶出力 Ejector force	Kn	70			70			70		
其他 General										
最大油泵压力 Max.Pump pressure	MPa	17.5			17.5			17.5		
伺服功率 Motor power/servo power	kw	27.8			31.3			31.3		
电热功率 Heating power	Kw	14.9			18.1			21.2		
外形尺寸(长x宽x高) Machine dimension(LxWxH)	m	5.73x1.44x2.21			6.05x1.54x2.4			6.17x1.62x2.43		
油箱容积 Tank volume	L	205			275			300		
机器重量 Machine weight	t	6.8			7.8			8.4		



Technical parameter

اطلاعات فنی

项目 Item	规格 Specification	NPC110				NPC140			NPC160		
		A	B	C	D	A	B	C	A	B	C
注射装置 Injection Unit											
螺杆直径 Screw diameter	mm	32	35	38	42	38	42	45	42	45	50
螺杆长径比 Screw L/D ratio	L/D	24.1	22	20.2	18.4	23.8	21.4	19.9	23.6	22	19.8
理论注射容量 Shot volume(theoretical) (ps)	cm ³	137	163	192	235	193	235	270	305	350	432
注射重量 Injection weight(ps)	g	125	148	175	213	176	213	246	277	319	393
注射速率 Injection rate	g/s	74	89	105	128	102	124	143	163	189	233
注射压力 Injection pressure	MPa	249	208	176	144	218	179	156	213	185	150
螺杆转速 Screw speed	rpm	265				250			250		
锁模装置 Clamping Unit											
锁模力 Clamping force	Kn	1100				1400			1600		
移模行程 Open stroke	mm	350				380			435		
拉杆间距(宽x高) Space between tie bars(WxH)	mm	360x360				410x410			470x470		
最大模厚 Max.Mould height	mm	380				450			520		
最小模厚 Min.Mould height	mm	150				160			180		
顶出行程 Ejector stroke	mm	100				120			135		
顶出力 Ejector force	Kn	38				50			50		
其他 General											
最大油泵压力 Max.Pump pressure	MPa	16				17.5			17.5		
伺服功率 Motor power/servo power	kw	18.7				18.7			27.8		
电热功率 Heating power	Kw	9.6				10			12.5		
外形尺寸(长x宽x高) Machine dimension(LxWxH)	m	4.32x1.1x1.9				4.75x1.19x1.98			5.28x1.34x2.06		
油箱容积 Tank volume	L	155				155			205		
机器重量 Machine weight	t	3.1				3.6			5.0		



Technical parameter

اطلاعات فنی



با ما در ارتباط باشید

NPC110 	NPC140 	NPC160
NPC320 	NPC380 	NPC450
NPC900 	NPC1000 	NPC1200
NPC200 	NPC260 	NPC280
NPC500 	NPC600 	NPC730
NPC1300 	NPC1600 	NPC2200



ماشینهای تزریق پلاستیک **نداف**
NADDAF MACHINERY
PLASTIC INJECTION MOLDING MACHINE



آدرس: ایران-مشهد، شهرک صنعتی طوس، فاز ۱، انتها تلاش جنوبی،
فاز ۴، چاپ ونشرا، ۴ پلاک ۱۱۵۲ و ۱۱۸۰ | شماره تماس: ۰۵۱-۳۵۴۱۹۷۶۸
۹۱۸۵۱۷.۳۳۷ | کد پستی: ۹۱۵۳۰۹۱۵۸۱ |
Address: No. 1152 and 1180 - chap va nashr 4.1 - Phase 4
End of Southern Endeavour - Tos Industrial Town - Mashhad - Iran
Contact number: +985135419768 | +9835419817
+989153091581 | Postalcode: 9185170337
www.naddafmachinery | naddaf1393@gmail.com
Naddafmachinery